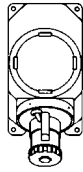


Russellstoll®

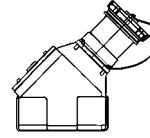
Hazardous Duty Plugs, Receptacles and Interlocks

Maximum
600 VAC or
250 VDC

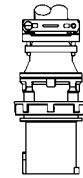
Ordering Information



Explosion-Proof Interlocked Receptacle With Circuit Breaker Class I, Class II



Explosion Proof Receptacle



Male Plug

Poles Wires	Voltage (VAC)	Cat. No.	Cat. No.	Cat. No.	Std. Bushing I.D.*
30 Amp					
2P3W	125	DBRE3 107 03000	DSE3 107 FR0	DS3 107 MP000	7/8"
2P3W	250	DBRE3 207 03000	DSE3 207 FR0	DS3 207 MP000	7/8"
3P4W	3Ø250	DBRE3 307 03000	DSE3 307 FR0	DS3 307 MP000	1"
3P4W	3Ø480	DBRE3 404 03000	DSE3 404 FR0	DS3 404 MP000	1"
4P5W	277/480	DBRE3 504 03000	DSE3 504 FR0	DS3 504 MP000	1 1/16"
60 Amp					
2P3W	250	DBRE6 207 06000	—	DS6 207 MP000	1 1/16"
3P4W	3Ø250	DBRE6 307 06000	—	DS6 307 MP000	1 5/16"
3P4W	3Ø480	DBRE6 404 06000	—	DS6 404 MP000	1 5/16"
4P5W	277/480	DBRE6 504 06000	—	DS6 504 MP000	1 1/2"
100 Amp					
2P3W	250	DBRE 1207 10000	—	DS 1207 MP000	1 1/16"
3P4W	3Ø250	DBRE 1307 10000	—	DS 1307 MP000	1 13/16"
3P4W	3Ø480	DBRE 1404 10000	—	DS 1404 MP000	1 13/16"
4P5W	277/480	DBRE 1504 10000	—	DS 1504 MP000	2"

* Non-fused version available. Replace DFRF with DNRF.

Boldface figures are for voltage assignment; for different ratings see following pages.

☞ * **Notes to Catalog Numbers: Suffixes**

▼Control Contacts

(position 12)
use "K" example:
DBRF6104060K0

Breaker Trip Ratings

(positions 9, 10, 11)
30 amp use 030
50 amp 050
60 amp 060

Shunt Trip Breaker

(position 13)
add "Z" to above:
DBRF6104060KZ

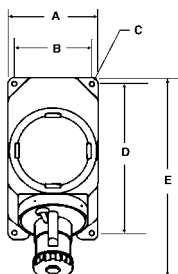
Non-Auto Sw. NAO

(repl. "DBRE" with
"DSRE")

For specification information and additional bushing sizes see MaxGard section, pages H9-H29.

Dimensions

Explosion-Proof Interlocked Receptacle



Amp	A	B	C	D	E
30	8 3/4"	7 1/2"	1/2"	14 3/4"	20"
60	8 3/4"	7 1/2"	1/2"	14 3/4"	20"
100	8 3/4"	7 1/2"	1/2"	14 3/4"	20"

Explosion-Proof Receptacle

